



Cros-Walk

Observation is one of the most important steps of the scientific method. Have you worked out what it is you're looking for?

1F	2C	3D	4L	5M	6J	7I	—	8K	9B	10E	11A	12G	13N	14B	15M	16O	17I	18A	19J
20H	21N	22D	23A	24E	25B	26K	27E	28O	29J	30I	31F	32G	33D	34K	35M	36A			
37L	38N	39O	40H	41B	42J	43K	44B	45C	46L	47A	48O	49E	50G	51N	52O	53I	54A		
55E	56F	57L	58B	59D	60H	61E	62I	63L	64A	65M	66G	67F	68J	69N	70C	71E	72B		
73I	74O	75G	76A	77J	78B	79D	80K	81N	82A	83L	84J	85F	86D	87C	88K	89E	90A		
91B	92M	93N	94J	95G	96O	97B	98M	99E	100I	101D	102K	103A	104H	105L	106I	107F			

A. $\frac{\quad}{103}$ $\frac{\quad}{90}$ $\frac{\quad}{11}$ $\frac{\quad}{54}$ $\frac{\quad}{82}$ $\frac{\quad}{36}$ $\frac{\quad}{23}$ $\frac{\quad}{76}$ $\frac{\quad}{64}$ $\frac{\quad}{18}$ $\frac{\quad}{47}$

I. $\frac{\quad}{73}$ $\frac{\quad}{7}$ $\frac{\quad}{53}$ $\frac{\quad}{100}$ $\frac{\quad}{30}$ $\frac{\quad}{62}$ $\frac{\quad}{106}$ $\frac{\quad}{17}$

B. $\frac{\quad}{97}$ $\frac{\quad}{25}$ $\frac{\quad}{44}$ $\frac{\quad}{58}$ $\frac{\quad}{78}$ $\frac{\quad}{72}$ $\frac{\quad}{14}$ $\frac{\quad}{91}$ $\frac{\quad}{41}$ $\frac{\quad}{9}$

J. $\frac{\quad}{77}$ $\frac{\quad}{6}$ $\frac{\quad}{94}$ $\frac{\quad}{19}$ $\frac{\quad}{84}$ $\frac{\quad}{42}$ $\frac{\quad}{68}$ $\frac{\quad}{29}$

C. $\frac{\quad}{70}$ $\frac{\quad}{2}$ $\frac{\quad}{87}$ $\frac{\quad}{45}$

K. $\frac{\quad}{8}$ $\frac{\quad}{34}$ $\frac{\quad}{102}$ $\frac{\quad}{26}$ $\frac{\quad}{43}$ $\frac{\quad}{88}$ $\frac{\quad}{80}$

D. $\frac{\quad}{86}$ $\frac{\quad}{59}$ $\frac{\quad}{79}$ $\frac{\quad}{101}$ $\frac{\quad}{33}$ $\frac{\quad}{22}$ $\frac{\quad}{3}$

L. $\frac{\quad}{105}$ $\frac{\quad}{57}$ $\frac{\quad}{4}$ $\frac{\quad}{83}$ $\frac{\quad}{46}$ $\frac{\quad}{37}$ $\frac{\quad}{63}$

E. $\frac{\quad}{89}$ $\frac{\quad}{61}$ $\frac{\quad}{71}$ $\frac{\quad}{24}$ $\frac{\quad}{49}$ $\frac{\quad}{10}$ $\frac{\quad}{27}$ $\frac{\quad}{99}$ $\frac{\quad}{55}$

M. $\frac{\quad}{35}$ $\frac{\quad}{65}$ $\frac{\quad}{92}$ $\frac{\quad}{5}$ $\frac{\quad}{98}$ $\frac{\quad}{15}$

F. $\frac{\quad}{107}$ $\frac{\quad}{56}$ $\frac{\quad}{67}$ $\frac{\quad}{1}$ $\frac{\quad}{31}$ $\frac{\quad}{85}$

N. $\frac{\quad}{69}$ $\frac{\quad}{21}$ $\frac{\quad}{38}$ $\frac{\quad}{93}$ $\frac{\quad}{51}$ $\frac{\quad}{13}$ $\frac{\quad}{81}$

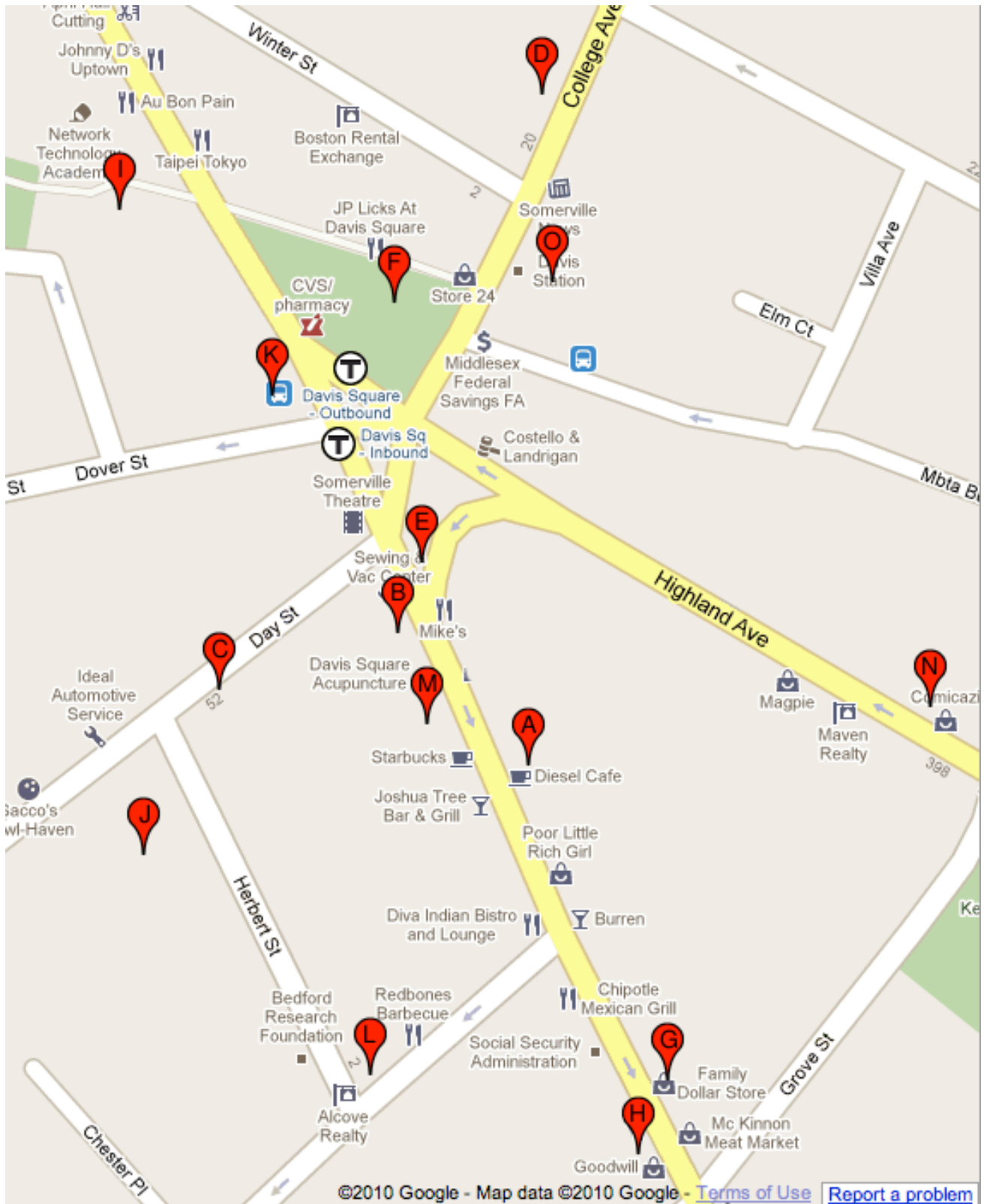
G. $\frac{\quad}{95}$ $\frac{\quad}{50}$ $\frac{\quad}{75}$ $\frac{\quad}{12}$ $\frac{\quad}{32}$ $\frac{\quad}{66}$

O. $\frac{\quad}{52}$ $\frac{\quad}{48}$ $\frac{\quad}{96}$ $\frac{\quad}{39}$ $\frac{\quad}{74}$ $\frac{\quad}{16}$ $\frac{\quad}{28}$

H. $\frac{\quad}{20}$ $\frac{\quad}{104}$ $\frac{\quad}{60}$ $\frac{\quad}{40}$

BAPHL

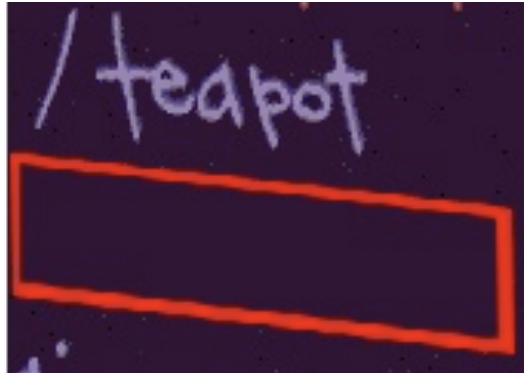
Cros-Walk



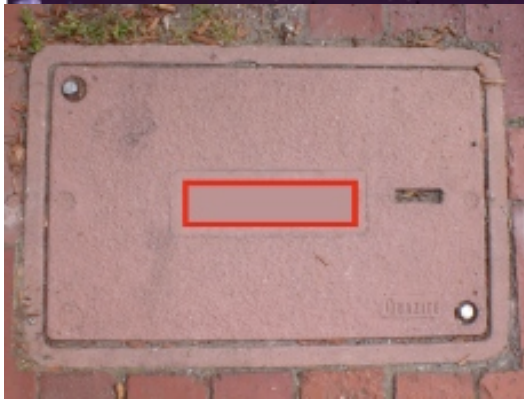
BAPHL

Cros-Walk

A. Like dark

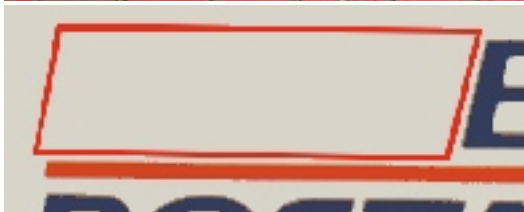


B.



al quantity measured in C

C.



s for measuring B

D.



car, for example

E. Having a re



ed attitude

BAPHL

Cros-Walk



BAPHL

Cros-Walk

J. Went too

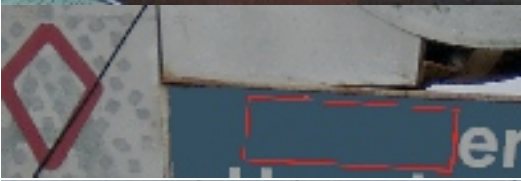


K. Less c



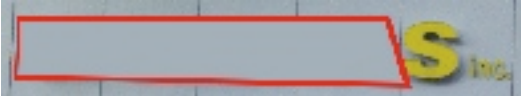
ed

L.



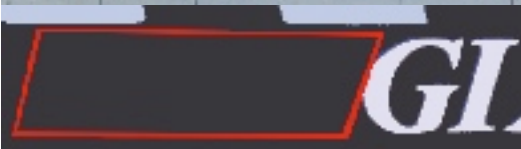
paws

M. Word following "



"

N. _____



(Beatles song)

O. Resident of

