

BIG GAME

SECOND
MEGAMETA

Finally it was time for the showdown of the season: The Back Bay Legends and the South End Celebs would go head-to-head. For the first inning, eight athletes (four from each team) took their spots on the same faces as their first practice game. For the second inning, the remaining eight athletes (four from each team again) took their spots on the same faces as the second practice game. Unfortunately, the scorecards were not completed and need a little extra information. Thankfully, each the two innings can be split up and reviewed separately.

In each inning, the ninth and most valuable player (M.V.P.) of a team starts on a given base and travels from base to base throughout the inning. BAPHLball is played not with a traditional sports ball, but with live poultry. Four sets of three consecutive “fowl balls” fly to the BAPHLball diamond, each one marked with a letter of the alphabet. Each set of three consecutive “fowl balls,” dividing the inning into quarters, spells a three-letter word.

When a “fowl ball” reaches the diamond, it is caught by an athlete, called the “catching player,” on a face neighboring the M.V.P. That athlete then throws the ball over an edge of the diamond to one of their neighbor athletes, called the “receiving player” (on the opposing team), and the M.V.P. then runs along the edge between those two players. The letter on the “fowl ball” matches the equipment played by only one of the two athletes to handle it, and that athlete scores a point for their team. That athlete, called “the scoring athlete,” scores by writing a letter (indexed from their own name) on each of the three bases touching their face of the diamond. Each of these letters is written to the right of any letters already on the base. Those bases are referred to as the “low base,” “middle base,” and “high base,” in order of the base numbers. After an inning, the bases are cleared out for the next inning.

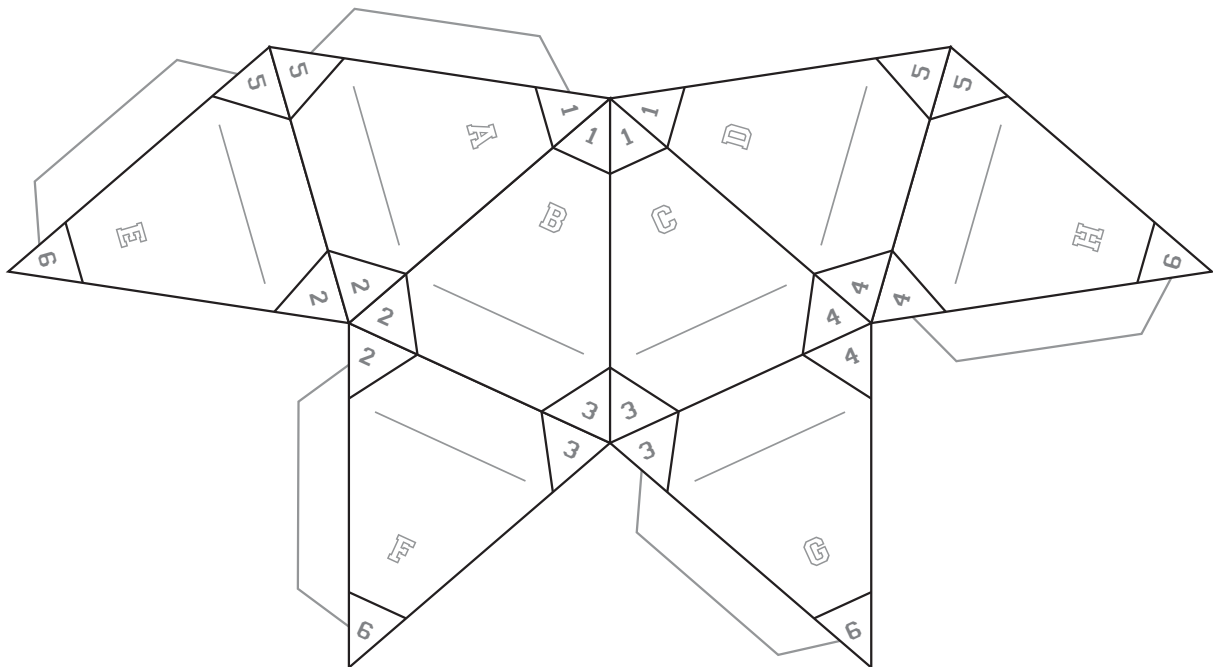
Finally, the M.V.P. retraces their steps. Starting at their ending base, they remove the first two letters on the base and keep the *second* one. They then return to their previous base, removing the first two letters on the base and keeping the *first* one. They continue this pattern, alternating which letter to keep at each base, until they have collected thirteen letters. Once they have completed their path, they reverse the letters they've collected to reveal their identity.

BIG GAME

SECOND
MEGAMETA

FIRST INNING

	ATHLETE	EQUIPMENT
FACE A	ANNIE OAKLEY	_____
FACE B	GOMEZ ADDAMS	_____
FACE C	SANDRA MAGNUS	_____
FACE D	PRINCESS TIANA	_____
FACE E	DAVID BOWMAN	_____
FACE F	MARTHA STEWART	_____
FACE G	YOSEMITE SAM	_____
FACE H	ELENA KAGAN	_____



BIG GAME

SECOND
MEGAMETA

FIRST INNING SCORECARD

Fowl Ball Order	Fowl Ball Letter	Catching Player	Receiving Player	M.V.P. Base (starts on 1)	Low Base Letter	Middle Base Letter	High Base Letter
1	A	ANNIE OAKLEY	PRINCESS TIANA		1	1	3
2	I	ELENA KAGAN	PRINCESS TIANA		8	2	1
3	M	ELENA KAGAN	YOSEMITE SAM		7	6	2
4	P	DAVID BOWMAN	MARTHA STEWART		8	7	5
5	O	ANNIE OAKLEY	GOMEZ ADDAMS		3	9	4
6	T	ANNIE OAKLEY	PRINCESS TIANA		6	5	9
7	G	ELENA KAGAN	PRINCESS TIANA		9	5	6
8	U	SANDRA MAGNUS	YOSEMITE SAM		3	4	9
9	T	MARTHA STEWART	YOSEMITE SAM		7	5	8
10	C	DAVID BOWMAN	MARTHA STEWART		2	6	7
11	O	ANNIE OAKLEY	GOMEZ ADDAMS		1	8	2
12	G	GOMEZ ADDAMS	SANDRA MAGNUS		3	1	1

LETTERS WRITTEN ON BASES

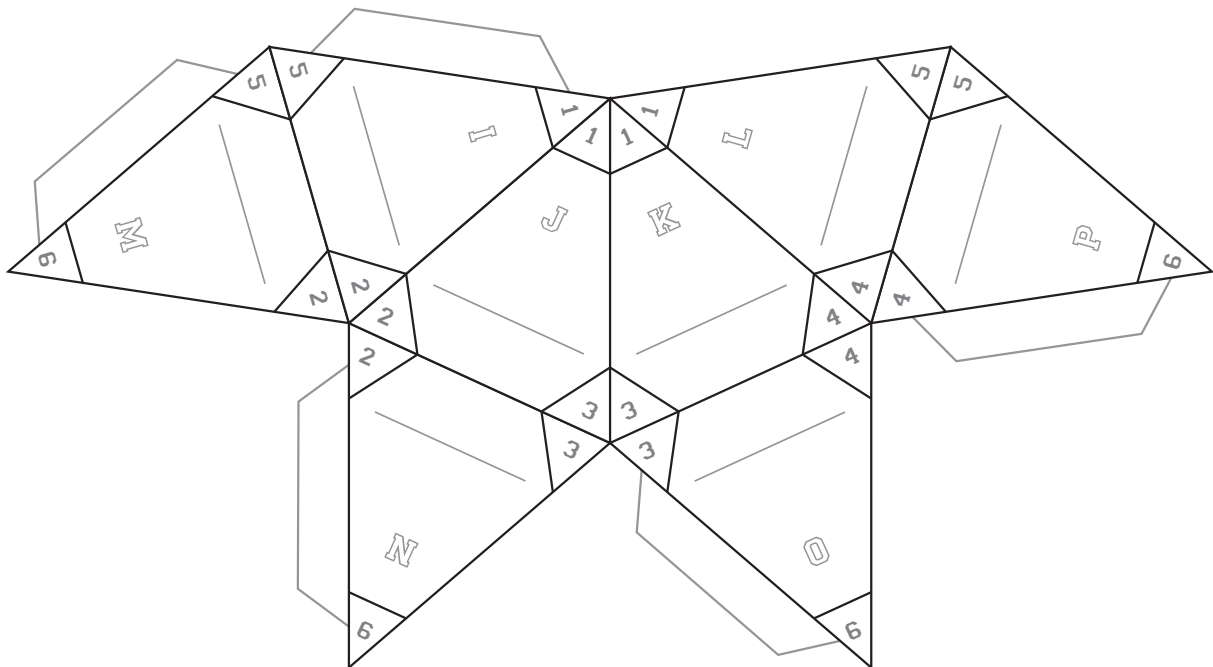
1	
2	
3	
4	
5	
6	

BIG GAME

SECOND
MEGAMETA

SECOND INNING

	ATHLETE	EQUIPMENT
FACE I	ROLAND DESCHAIN	_____
FACE J	MICHAEL KORS	_____
FACE K	MAJOR NELSON	_____
FACE L	JAMIE OLIVER	_____
FACE M	GUION BLUFORD	_____
FACE N	SWEDISH CHEF	_____
FACE O	JESSE JAMES	_____
FACE P	DRACO MALFOY	_____



BIG GAME

SECOND
MEGAMETA

SECOND INNING SCORECARD

Fowl Ball Order	Fowl Ball Letter	Catching Player	Receiving Player	M.V.P. Base (starts on 4)	Low Base Letter	Middle Base Letter	High Base Letter
1	T	JESSE JAMES	MAJOR NELSON		5	7	6
2	A	JESSE JAMES	SWEDISH CHEF		1	3	4
3	G	DRACO MALFOY	GUION BLUFORD		4	4	7
4	C	GUION BLUFORD	ROLAND DESCHAIN		2	5	1
5	A	GUION BLUFORD	SWEDISH CHEF		9	8	1
6	R	JESSE JAMES	SWEDISH CHEF		3	9	8
7	B	MAJOR NELSON	MICHAEL KORS		8	9	3
8	U	JAMIE OLIVER	MAJOR NELSON		1	8	9
9	G	DRACO MALFOY	JESSE JAMES		1	5	2
10	S	GUION BLUFORD	SWEDISH CHEF		4	7	4
11	P	GUION BLUFORD	ROLAND DESCHAIN		4	3	1
12	A	JAMIE OLIVER	ROLAND DESCHAIN		6	7	5

LETTERS WRITTEN ON BASES

1	
2	
3	
4	
5	
6	