

# GLITCHED CONNECTION

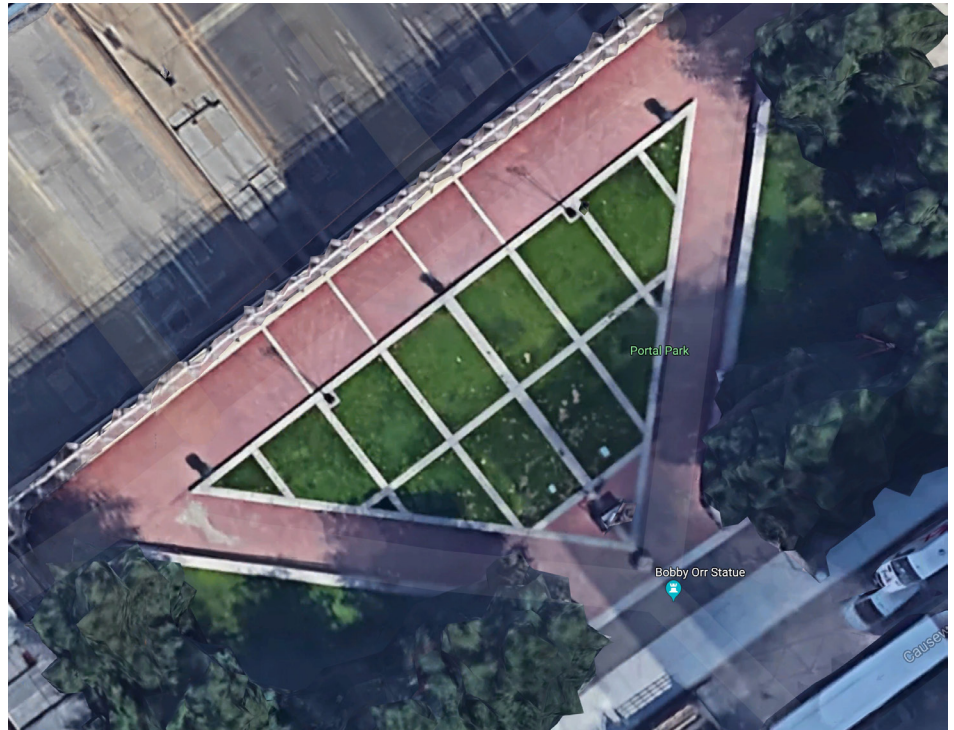
by Julia Tenney

location video: <https://www.youtube.com/watch?v=OlpYuT9G-R0>

Visitors to the park would see the diamond-shaped plaque to Tip O'Neill, aka "The Tip Diamond", directly in front of the hockey statue.

Most info about the statue is easily found online, except for the signature, which is visible in that video.

Hopefully, visitors will figure out that the park contains a walkable map of the Bulfinch Triangle, the Historic district that starts on the other side of Causeway. (Even if they can't identify the term "Bulfinch" because it's not mentioned except online, enough of the street names should look familiar to realize it's a map of the nearby neighborhood). The only diagonal road towards Lovejoy Wharf, from the statue, is on this park map. (There is a permanent sign, even if the giant "LOVEJOY WHARF luxury condos available soon" is gone by BAPHL 18).



LOCATION INFORMATION

**BAPHL 18** • 26 August 2018